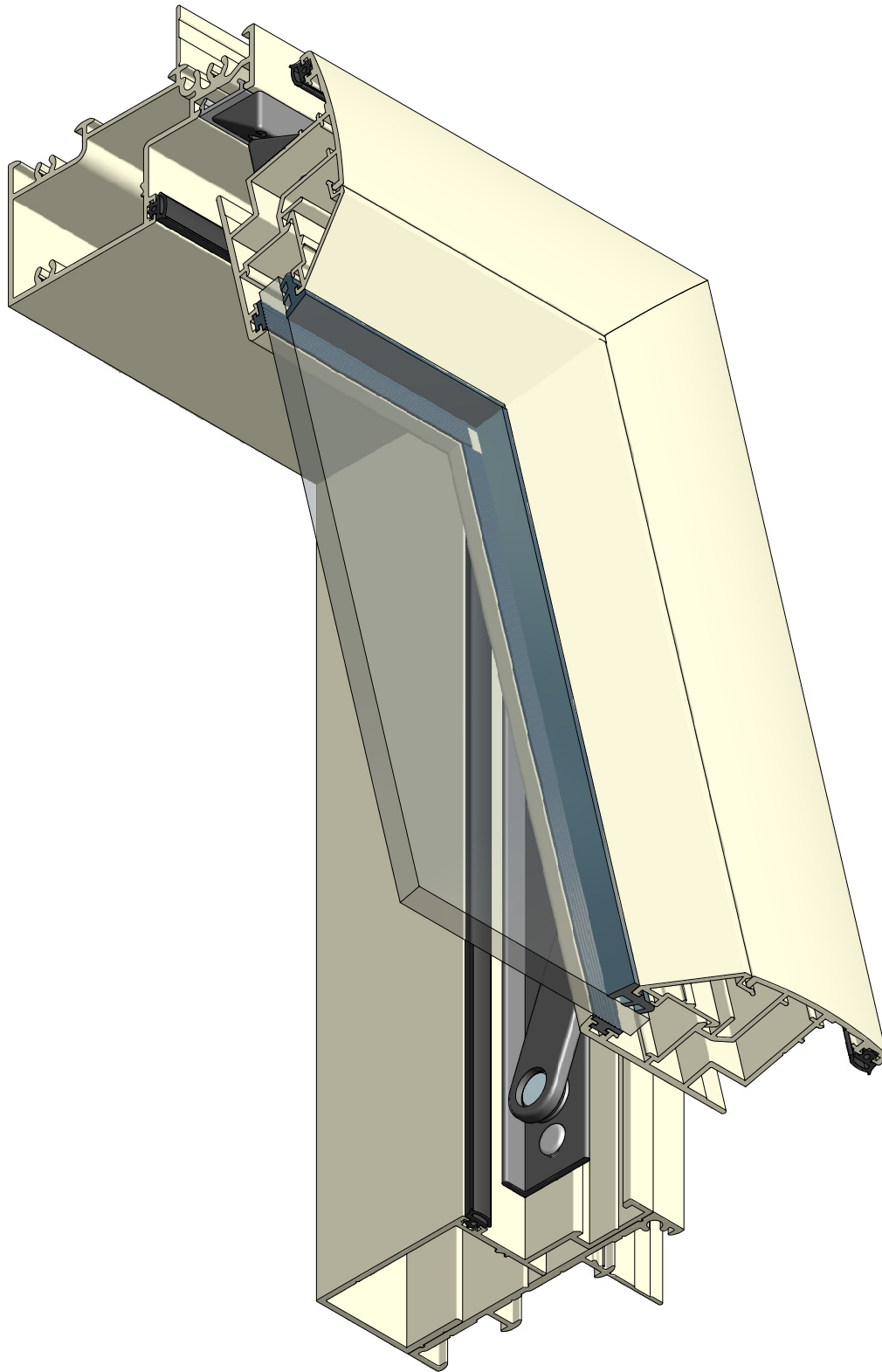
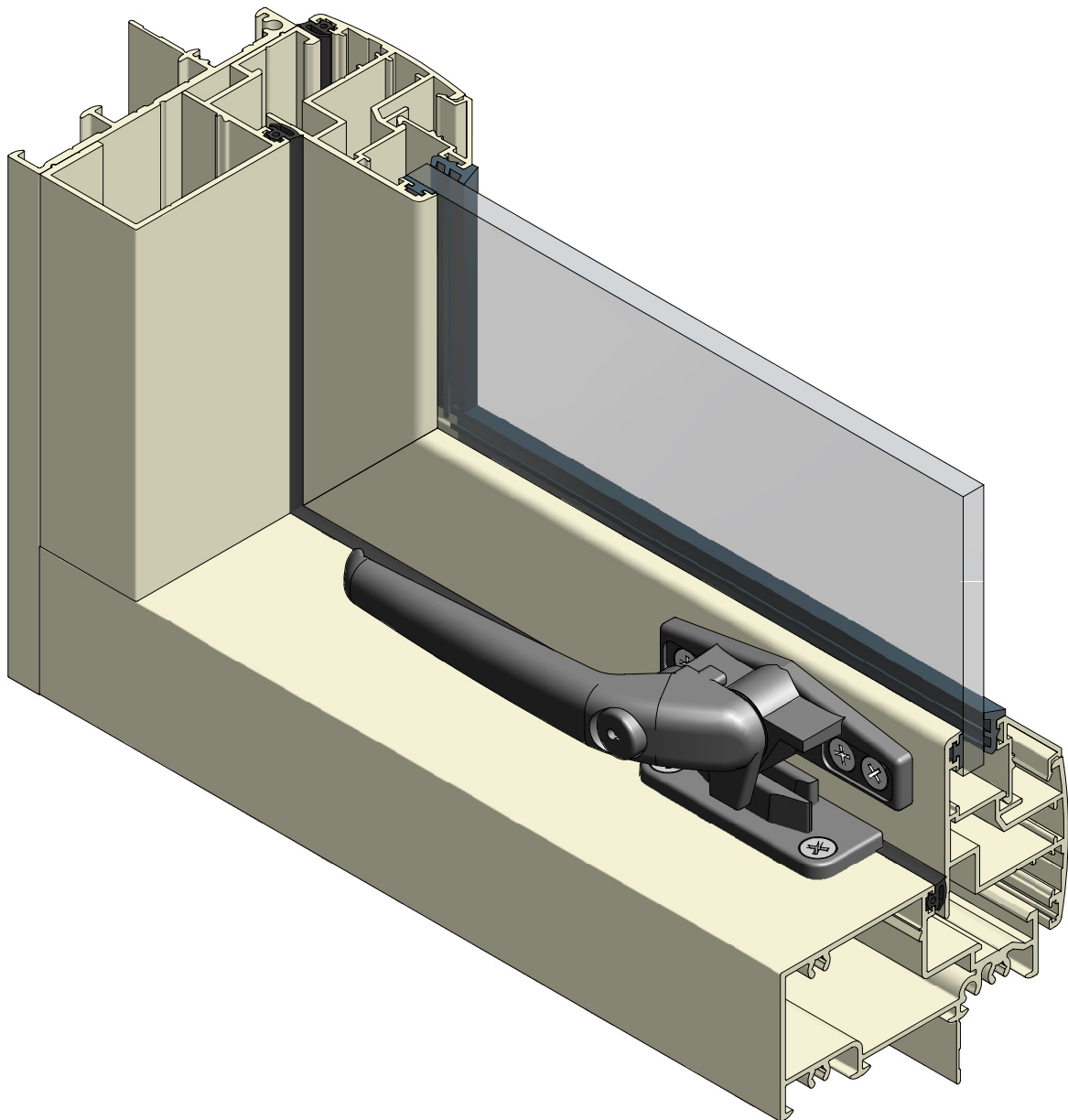


## Awning Window

### Feature Gallery

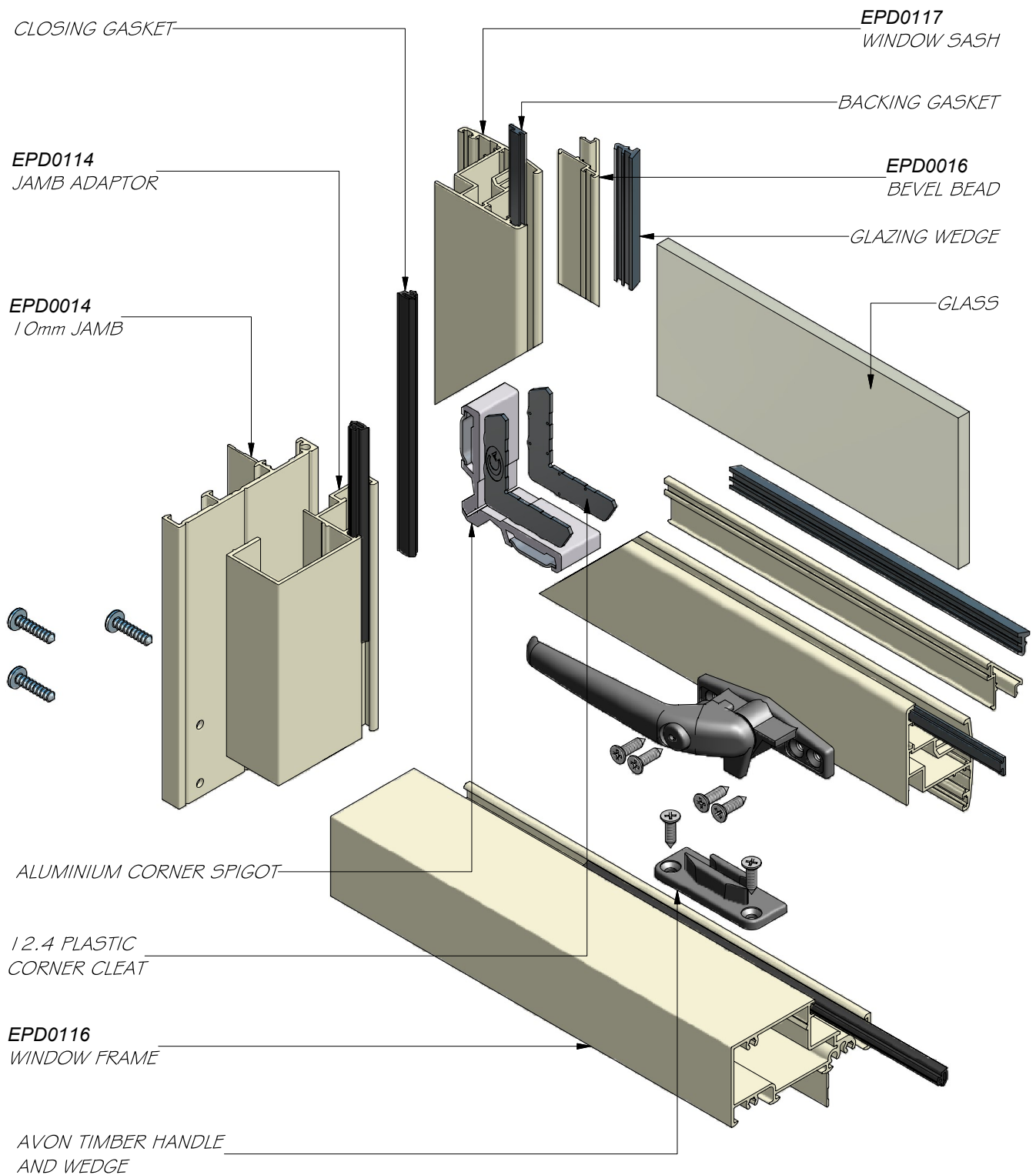
---





# Awning Window

## Feature Gallery

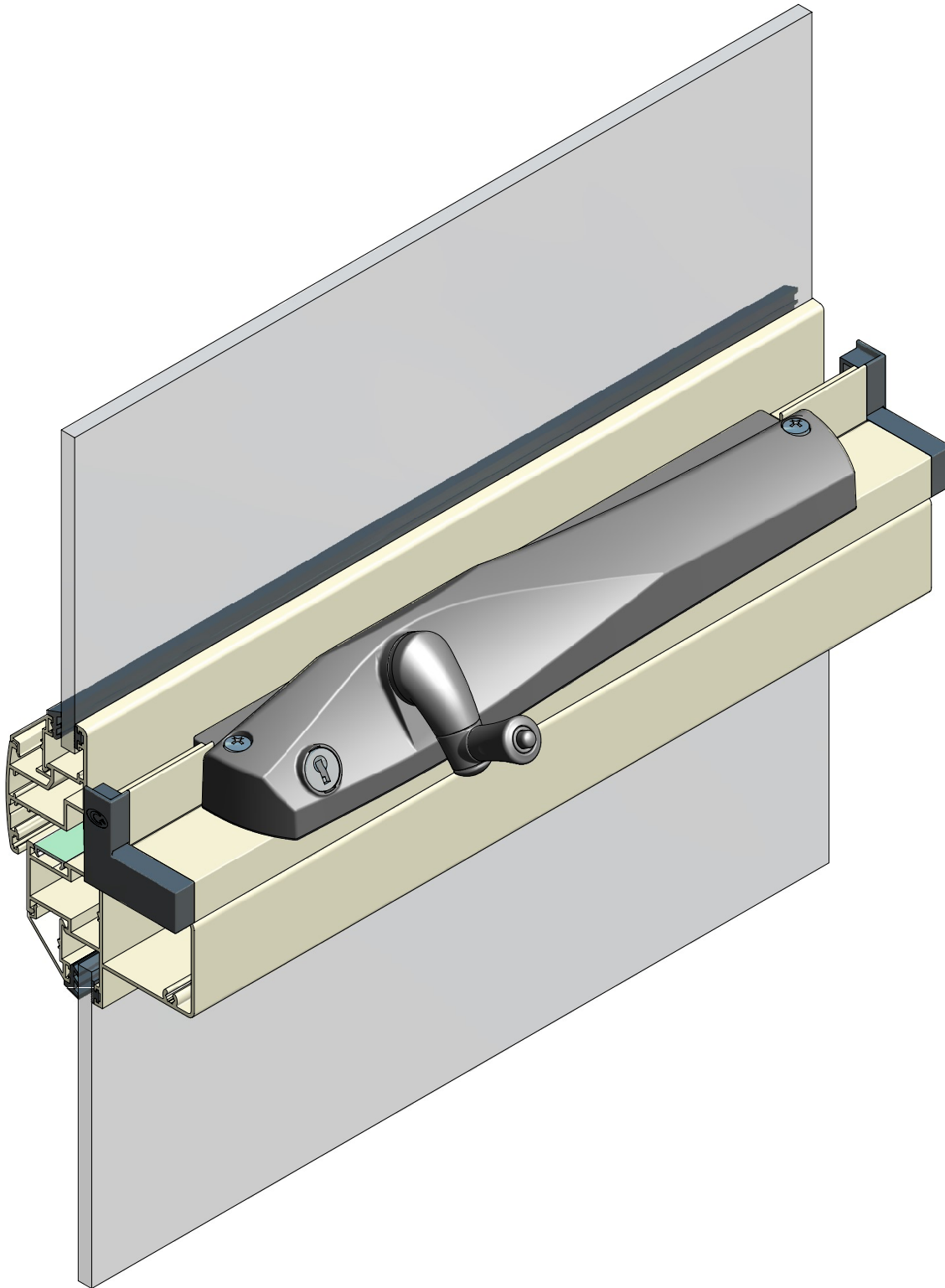


Awning Window

---

**Feature Gallery**

---



## Awning Window

---

### Glossary

---

<i>Aluminium Corner Spigot</i>	<i>Aluminium body with steel sprung locating pin used to join a mitred sash. Tightened using an allen key.</i>
<i>Corner Cleat</i>	<i>Injection molded plastic component used in the assembly of a mitred sash to prevent twisting of the corner joint.</i>
<i>Mullion Connector</i>	<i>Extruded aluminium component used to connect mullions/transoms to sill, head or jamb. Bracket slides into a specially designed slot in sill, head or jamb and is tightened using an allen key. A large countersunk machined screw is placed through the pre machined member into the mullion connector holding it in place.</i>
<i>Snubber Block</i>	<i>Injection moulded plastic component that is attached to the sash and frame of a large casement or awning window (refer to Sect 10 Page 11). When the sash is closed both snubber blocks lock together and stop the sash from pulling away from the frame when under pressure.</i>